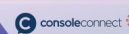
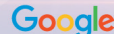


# Peering Personals



1CC TECHNOLOGY GROUP



Peering personals is the brief introduction to your IP infrastructure and Peering information

List :

Akamai Technologies	NAPAfrica AS37195
Amazon Web Services	RouteViews
BKNIX	Sea IX
ByteDance	SUNeVision / iAdvantage Ltd.
Fastly	TELEHOUSE Thailand
Globe Telecom	
JPIX	
JPNAP	



<b>ASN</b>	20940 (CDN), 32787 (DDoS Mitigation)
<b>Traffic Profile</b>	Content for AS20940, mostly inbound for AS32787
<b>Traffic Volume</b>	200+Tbps for AS20940, variable for AS32787
<b>Peering Policy</b>	Open for AS20940, selective for AS32787
<b>Peering Locations</b>	100+ Public IXes included BKNIX for AS20940.  BBIX, JPIX, JPNAP (Tokyo); HKIX; Equinix IX (Sydney, Hong Kong, Singapore); IX Australia, MegalX (Syd and Mel) and more for AS32787
<b>Peeringdb Entry</b>	as20940.peeringdb.com, as32787.peeringdb.com
<b>Contact Information</b>	peering@akamai.com



# Amazon Web Services



<b>ASN</b>	<b>AS16509</b>
<b>Traffic Profile</b>	Balanced
<b>Traffic Volume</b>	Tbps level
<b>Peering Policy</b>	Selective
<b>Peering Locations</b>	Bangkok, Thailand (BKNIX & THIX – Public Peering, TCCT Bangna – Private Peering) Other APAC locations - MY, SG, ID, PH, HK, JP, KR, AU, NZ
<b>Peeringdb Entry</b>	as16509.peeringdb.com
<b>Contact Information</b>	<a href="mailto:peering-apac@amazon.com">peering-apac@amazon.com</a> for peering request <a href="mailto:peering-to@amazon.com">peering-to@amazon.com</a> for operation related

IXP Name/s	BKNIX	BKNIX Chiang Mai
Location	Bangkok, Thailand	Chiang Mai, Thailand
Point of Presence	<ul style="list-style-type: none"> <li>TCC Bangna (supported by ISOC)</li> <li>CSL - CW Tower (supported by ISOC)</li> <li>AIMS DC TH</li> <li>NTT BKK2 (supported by ISOC)</li> </ul>	<ul style="list-style-type: none"> <li>Symphony (supported by APNIC)</li> <li>ITSC, CMU</li> </ul>
# of connected ASNs	46	3
Peak Traffic	101 G	50 M
Route Server	Yes <BIRD 2>	Yes <BIRD 2>
Peeringdb/IXPdb	<a href="https://www.peeringdb.com/ix/1025">https://www.peeringdb.com/ix/1025</a> <a href="https://ixpdb.euro-ix.net/en/ixpdb/ixp/587">https://ixpdb.euro-ix.net/en/ixpdb/ixp/587</a>	-

## Recent updates:

- Remote peering service to JPNAP Tokyo by NTT Thailand
- BKNIX will be hosting first M-Root DNS instance in Thailand.
- 6 of 100G port has been deployed totally.

Contact Information : [info@bknix.co.th](mailto:info@bknix.co.th) , [peering@bknix.co.th](mailto:peering@bknix.co.th)



Patama Thanapat Nan

# ByteDance

<b>ASN</b>	<b>396986, 138699</b>
<b>Traffic Profile</b>	Content (TikTok, TopBuzz, BuzzVideo, etc)
<b>Traffic Volume</b>	10Tbps+
<b>Peering Policy</b>	Open
<b>Peering Locations</b>	Public Peering IX – 15+ IXs & More to Come Private Peering – 30+ Facilities & Growing
<b>Peeringdb Entry</b>	<a href="https://www.peeringdb.com/asn/396986">https://www.peeringdb.com/asn/396986</a> <a href="https://www.bytedance.com/en/peering">https://www.bytedance.com/en/peering</a> (Peering Policy)
<b>Contact Information</b>	<a href="mailto:peering@bytedance.com">peering@bytedance.com</a> Johnathan Lee, <a href="mailto:johnathan.lee@bytedance.com">johnathan.lee@bytedance.com</a>



<b>ASN</b>	<b>AS 54113</b>
<b>Traffic Profile</b>	Content
<b>Traffic Volume</b>	100T+
<b>Peering Policy</b>	Selective
<b>Peering Locations</b>	<ul style="list-style-type: none"><li>● Japan[BBIX, JPNAP, JPIX, EquinIX]/Hong Kong[Equinix]/Singapore [Equinix, SGIX]</li><li>● Kuala Lumpur, [MyIX]</li><li>● Manila, ePLDT Vitro Makati [GetafIX]</li><li>● Soel, [KINX]</li><li>● <b>Bangkok, TCCT [BKNIX, THIX]</b></li></ul>
<b>Peeringdb Entry</b>	<a href="https://www.peeringdb.com/net/5520">https://www.peeringdb.com/net/5520</a>
<b>Contact Information</b>	Yutaro Fujii, <a href="mailto:yfujii@fastly.com">yfujii@fastly.com</a> Maria Yu, <a href="mailto:myu@fastly.com">myu@fastly.com</a>

*Planned launch  
Middle of June!!*



<b>ASN</b>	4775
<b>Traffic Profile</b>	Eyeballs
<b>Traffic Volume</b>	5Tbps+
<b>Peering Policy</b>	Open
<b>Peering Locations</b>	26 locations : US, Asia(JPN, HKG, SNG, PHL) EU (remote Peering)
<b>Peeringdb Entry</b>	as4775.peeringdb.com
<b>Contact Information</b>	Achie Atienza, peering@globe.com.ph





## Globe IX (GIX)



IXP Name/s	GIX	GIX Cebu	GIX Davao / Quezon City
Location	Makati, Philippines	Cebu, Philippines	Davao & Quezon City, Ph
Point of Presence	Globe MK2	Globe CB1	Globe DV1 & QC2
# of connected ASNs	16	Ongoing TBD	Ongoing TBD
Peak Traffic	64Gbps+	Ongoing TBD	Ongoing TBD
Route Server	Yes	Ongoing TBD	Ongoing TBD
Peeringdb / IXPdb	<a href="https://www.peeringdb.com/ix/95">https://www.peeringdb.com/ix/95</a>	<a href="https://www.peeringdb.com/ix/145">https://www.peeringdb.com/ix/145</a>	Ongoing TB

Contact Information :  
[peering@globe.com.ph](mailto:peering@globe.com.ph)



# Globe Telecom



Data Center	Globe Mk2	Globe QC2	Globe CB1	Globe DV1
Location	Makati, Philippines	Quezon, Philippines	Cebu, Philippines	Davao, Philippines
IXP Presence	GIX, PhOpenIX, GETAFIX	GIX (Ongoing)	GIX	GIX (Ongoing)

Contact Information :  
[peering@globe.com.ph](mailto:peering@globe.com.ph)



# Japan Internet Exchange

IXP Name/s	JPIX TOKYO	JPIX OSAKA	JPIX FUKUOKA
Location	Tokyo, Nagoya and Okinawa, Japan	Osaka and Nagoya, Japan	Fukuoka, Japan
Point of Presence	<ul style="list-style-type: none"> <li>• KDDI TELEHOUSE Otemachi</li> <li>• NTT DATA Otemachi</li> <li>• Comspace I</li> <li>• Equinix TY2</li> <li>• AT Tokyo</li> <li>• COLT TDC1</li> <li>• NTT DATA Mitaka DC East</li> <li>• NTT COM Nexcenter DC</li> <li>• Otemachi Place</li> <li>• Meitetsucom DC (Nagoya)</li> <li>• OCH DC (Okinawa)</li> <li>• MC-Digital Realty NRT10 (coming soon)</li> </ul>	<ul style="list-style-type: none"> <li>• NTT DATA Dojima aka. Dojima Bldg. #4</li> <li>• KDDI TELEHOUSE Osaka 1&amp;2</li> <li>• Equinix OS1</li> <li>• Meitetsucom DC (Nagoya)</li> <li>• MC-Digital Realty KIX11 (coming soon)</li> </ul>	<ul style="list-style-type: none"> <li>• QTnet DC3</li> <li>• AT Tokyo QC1</li> </ul>
# of connected ASNs	250	87	Just opened
Peak Traffic	2.0Tbps	950Gbps	Just opened
Route Server	Yes (Cisco IOS-XE)	Yes (Cisco IOS-XE)	Just opened
Peeringdb/IXPdb	<a href="https://www.peeringdb.com/ix/30">https://www.peeringdb.com/ix/30</a>	<a href="https://www.peeringdb.com/ix/564">https://www.peeringdb.com/ix/564</a>	<a href="https://www.peeringdb.com/ix/3721">https://www.peeringdb.com/ix/3721</a>

▸Peering Persons : Mugi Ma  
▸Contact Information : mugima@jpix.ad.jp



# JPNAP (IX in Japan)



IX Name	JPNAP Tokyo	JPNAP Osaka	JPNAP Fukuoka	JPNAP Sendai
City, Country	Tokyo, Japan	Osaka, Japan	Fukuoka, Japan	Sendai, Japan
Point of Presence	<ul style="list-style-type: none"> <li>• NTTCom TK1/TK7</li> <li>• Equinix TY2/TY4</li> <li>• ComSpace 1</li> <li>• AT Tokyo (CC1)</li> <li>• Colt (Shiohama)</li> <li>• BBT (Otemachi)</li> <li>• IJ Shiroi DC +3DC</li> </ul>	<ul style="list-style-type: none"> <li>• NTT Data Dojima (Dojima #4)</li> <li>• NTT Dojima #3</li> <li>• NTT Dojima #1</li> <li>• Equinix OS1</li> </ul>	<ul style="list-style-type: none"> <li>• QTnet DC#3</li> </ul>	<ul style="list-style-type: none"> <li>• NTT EAST Miyagi DC</li> </ul>
# of connected ASN	230AS			
Peak traffic (4.73T)	3.2T	1.5T	26.5G	90M
Route Servers	Yes (2*BIRD2.0)			
RPKI	Yes			
Contact info	info@mfeed.ad.jp			



\*Remote peering to JPNAP Tokyo is newly supported by BKNIX, NTT Thai, Megaport, BICS and IPTP etc

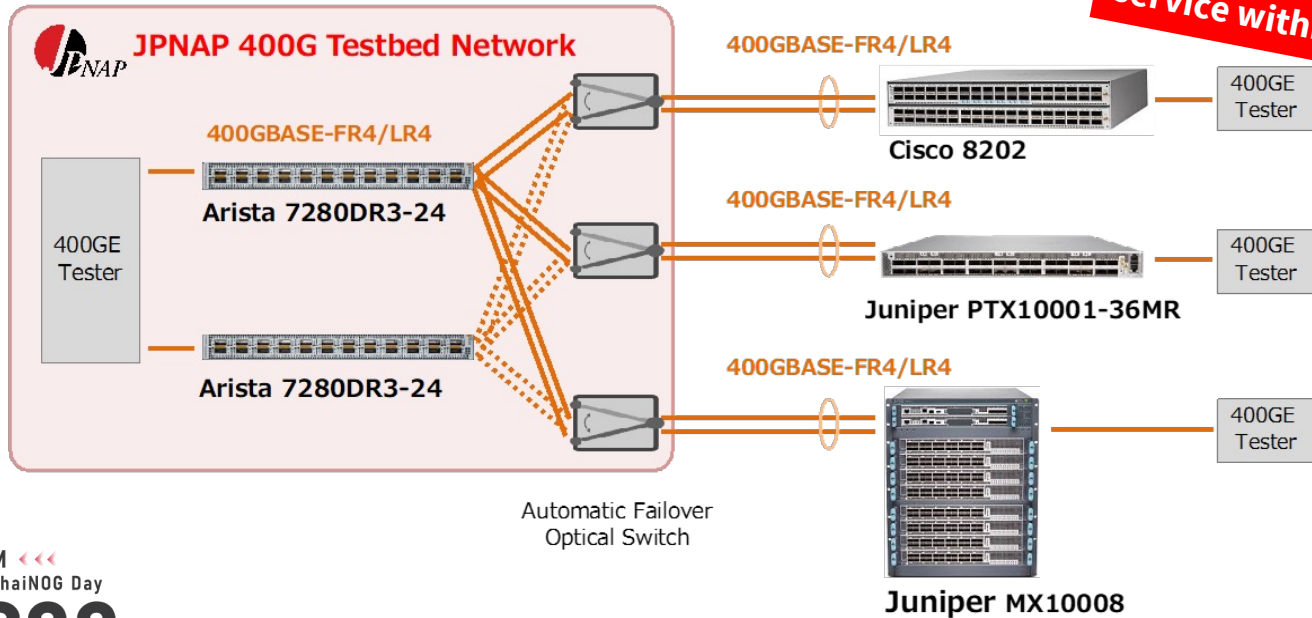
\*Just launched JPNAP Chinese office

Contact us! : info@mfeed.ad.jp

# Prove of concept 400GE service deployment

- 400GE interoperability experiments with IJ and NTT in April 2022
- Confirmed that 400GE is commercially viable and well performed for IX !

【Experimental system】



**Planning to launch 400 GE port service within FY 2022 !**

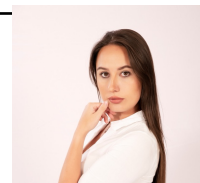
# NAPAfrica AS37195



IX Name	NAPAfrica Johannesburg	NAPAfrica Cape Town	NAPAfrica Durban
City, Country	Johannesburg, South Africa	Cape Town, South Africa	Durban, South Africa
Point of Presence	• Teraco Data Environments	• Teraco Data Environments	• Teraco Data Environment s
# of connected ASN	497	240	112
Peak traffic	1.75T	364G	44.4G
Route Servers	Yes	Yes	Yes
RPKI	Yes	Yes	Yes
Contact info	<a href="mailto:nap@teraco.co.za">nap@teraco.co.za</a> Yolandi Robinson <Yolandi@teraco.co.za>		Contact Persons

- Recent updates

We had an incredible growth in traffic (by 70% in 2020 and 100% in 2021)



Yolandi

# RouteViews



<b>ASN</b>	<b>6447</b>
<b>Traffic Profile</b>	Educational/Research
<b>Traffic Volume</b>	Under 100Mbps
<b>Peering Policy</b>	Open
<b>Peering Locations</b>	36 IXes around the world (including BKNIX)
<b>Peeringdb Entry</b>	<a href="https://www.peeringdb.com/asn/6447">https://www.peeringdb.com/asn/6447</a>
<b>Contact Information</b>	Ryan Leonard-Anger, Hans Kuhn, Philip Smith <help@routeviews.org>



## Sea IX for Garena, Shopee, SeaMoneney



<b>ASN</b>	137831
<b>Traffic Profile</b>	Content
<b>Traffic Volume</b>	~ 5 Tbps
<b>Peering Policy</b>	Selective
<b>Peering Locations</b>	<b>SG</b> Equinix, BBIX <b>ID</b> DCI-IX, OpenIXP, JKT-IX Please refer to peeringdb and contact us.
<b>Peeringdb Entry</b>	<a href="https://www.peeringdb.com/net/17824">https://www.peeringdb.com/net/17824</a>
<b>Contact Information</b>	<a href="mailto:peering@sea.com">peering@sea.com</a>



## SUNeVision / iAdvantage

<b>ASN</b>	<b>9729</b>
<b>Traffic Profile</b>	Balanced (Outbound from OTT / Enterprise)
<b>Traffic Volume</b>	10 Gbps
<b>Peering Policy</b>	Open
<b>Peering Locations</b>	<ul style="list-style-type: none"> <li>• HKIX/HKIX1b (Hong Kong)</li> <li>• HKIX3/HKIX3b (@MEGA Campus, Hong Kong)</li> <li>• iAIX (@MEGA Campus, Hong Kong)</li> </ul> <p><b>(MEGA Campus: MEGA-i, MEGA Plus, MEGA Two)</b></p>
<b>Peeringdb Entry</b>	as9729.peeringdb.com
<b>Contact Information</b>	Mike Ng: <a href="mailto:mikeng@sunevision.com">mikeng@sunevision.com</a> Andrew Lee: <a href="mailto:andrewlee@sunevision.com">andrewlee@sunevision.com</a>
<b>Website</b>	<a href="http://www.sunevision.com">www.sunevision.com</a> ; <a href="http://www.iadvantage.net">www.iadvantage.net</a>

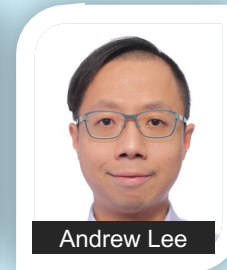
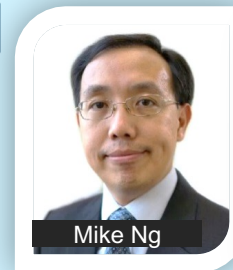
One of the Largest  
Telecom Hubs in Asia with  
**Asia's Number One  
Connectivity**



### Updates

- New Data Centres – MEGA Gateway, MEGA IDC, MEGA Fanling
- Acquired new site in Chung Hom Kok, Hong Kong (RBL1219) for Second Cable Landing Station

### Peering Advisors



## SUNeVision / iAdvantage

<b>IXP Name/s</b>	<b>iAIX (iAdvantage Internet Exchange)</b>
<b>Location</b>	Hong Kong, China
<b>Point of Presence</b>	<b>MEGA Campus</b> - MEGA-i, MEGA Plus, MEGA Two - MEGA Gateway, MEGA IDC (new data centres)
<b># of connected ASNs</b>	20+
<b>Peak Traffic</b>	10 Gbps+
<b>Route Server</b>	Yes (Both IPv4 and IPv6) (Traffic from Few Global CDN and Mainland China OTT)
<b>Peeringdb/IXPdb</b>	<a href="https://www.peeringdb.com/ix/88">https://www.peeringdb.com/ix/88</a>
<b>Website</b>	<a href="http://www.sunevision.com">www.sunevision.com</a> ; <a href="http://www.iadvantage.net">www.iadvantage.net</a>



### Updates

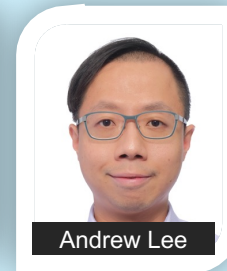
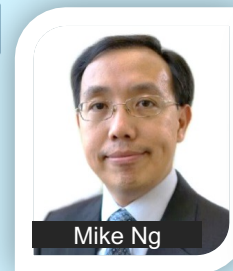
- Prefix filter adopted for support route server capability
- Acquired new site in Chung Hom Kok, Hong Kong (RBL1219) for Second Cable Landing Station



### Contacts

- Mike Ng ([mikeng@sunevision.com](mailto:mikeng@sunevision.com))
- Andrew Lee ([andrewlee@sunevision.com](mailto:andrewlee@sunevision.com))

### Peering Advisors



## SUNeVision / iAdvantage

<b>Data Center</b>	<b>MEGA Campus</b> <ul style="list-style-type: none"><li>• MEGA-i</li><li>• MEGA Plus</li><li>• MEGA Two</li><li>• MEGA Gateway (new DC)</li><li>• MEGA IDC (new DC)</li></ul>
<b>Location</b>	Hong Kong, China
<b>IXP presence</b>	<ul style="list-style-type: none"><li>• AMSIX-HK</li><li>• BBIX-Asia / BBIX-HK</li><li>• Equinix HK</li><li>• HKIX3 / HKIX3b</li><li>• iAIX (iAdvantage Internet Exchange)</li><li>• KINX</li><li>• NetIX</li></ul>
<b>Website</b>	<a href="http://www.sunevision.com">www.sunevision.com</a> ; <a href="http://www.iadvantage.net">www.iadvantage.net</a>



### Updates

Acquired new site in Chung Hom Kok, Hong Kong (RBL1219) for Second Cable Landing Station

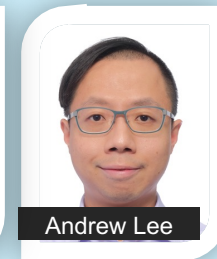
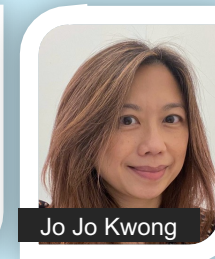
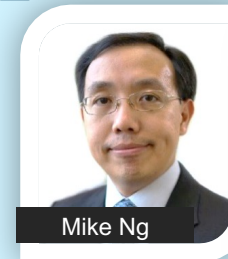


### Contacts

- Mike Ng ([mikeng@sunevision.com](mailto:mikeng@sunevision.com))
- Jo Jo Kwong ([jojokwong@sunevision.com](mailto:jojokwong@sunevision.com))
- Andrew Lee ([andrewlee@sunevision.com](mailto:andrewlee@sunevision.com))



### Peering Advisors



<b>ASN</b>	<b>&lt;2516&gt; KDDI Corp</b> <b>TELEHOUSE : Carrier Neutral Data Centers</b>
<b>Traffic Profile</b>	International Telecom Carriers
<b>Traffic Volume</b>	<N/A>
<b>Peering Policy</b>	<N/A>
<b>Peering Locations</b>	TELEHOUSE Thailand will offer to be peering location in metro Bangkok
<b>Peeringdb Entry</b>	as2516.peeringdb.com (KDDI) You can search “TELEHOUSE” in peeringdb
<b>Contact Information</b>	sales@telehouse.co.th

<b>IXP Name/s</b>	<TELEHOUSE Thailand>	<TELEHOUSE>
<b>Location</b>	<Bangkok, Thailand>	GLOBAL
<b>Point of Presence</b>	<TELEHOUSE Bangkok>	<45 Data Centers around the world>
<b># of connected ASNs</b>	<N/A>	<N/A>
<b>Peak Traffic</b>	<N/A>	<N/A>
<b>Route Server</b>	<N/A>	<N/A>
<b>Peeringdb/IXPdb</b>	Will register soon	<a href="https://www.peeringdb.com/org/7">https://www.peeringdb.com/org/7</a>

# Thank you

This slide will be available on the website  
[peeringforum.bknix.co.th](http://peeringforum.bknix.co.th)



ICC TECHNOLOGY GROUP

