

Telehouse : Panel Discussion

23 May 2022



Thailand situation of Mobile and Internet



Internet Banking

**World's
No.1**



Mobile Payment

**World's
No.2**



Internet games

**World's
No.1**



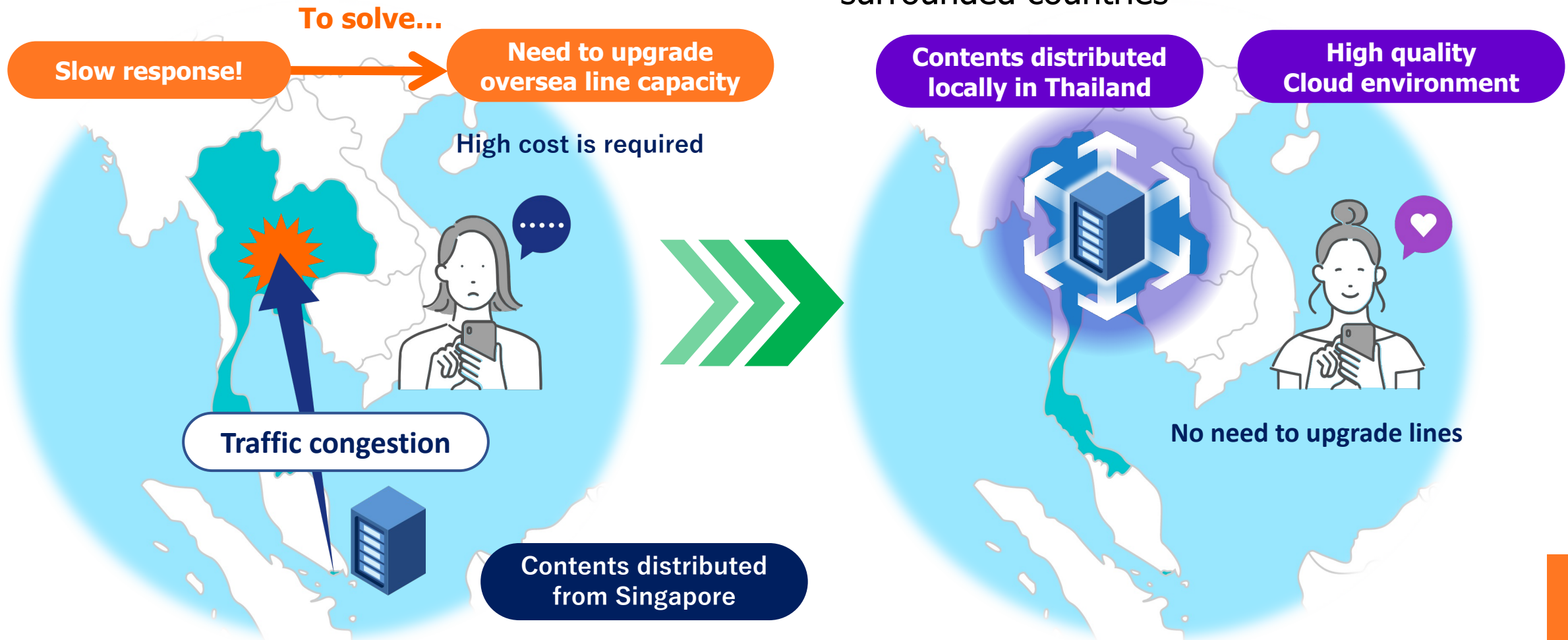
Mobile Broadband

**Data Use
98.7%**

The Closer Cloud, the Better for customer


We see trend of “coming to Thailand”

And the market is not only Thailand, but also surrounded countries



TELEHOUSE London is World No.1 in Connectivity

of connections
between operators

 1	TELEHOUSE (London)	848
2	Interxion (Frankfurt)	472
3	Equinix (Ashburn)	402
	⋮	
7	TELEHOUSE (Paris)	282



TELEHOUSE London

Source: Peering DB 2021.12

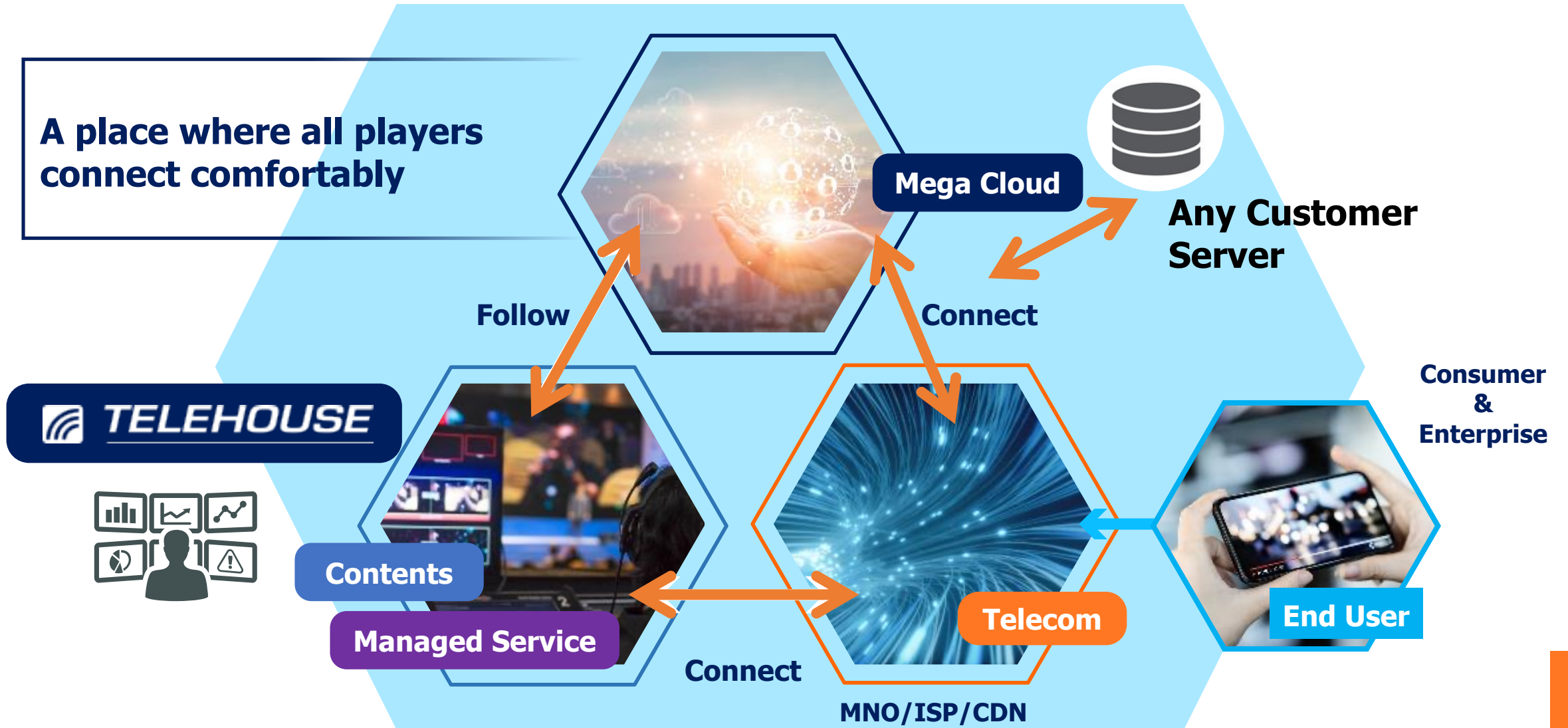
Hub means, Traffic

We could measure volume of the traffic that goes in/out of Thailand

The increase of international traffic can indicate the “position” to be the hub



Interconnection DC is the Ecosystem



Refer from news about Singapore DC Moratorium

datacenterdynamics.com/en/news/singapore-lifts-data-center-moratorium-but-sets-conditions/

HOME > NEWS > ASIA PACIFIC

Singapore lifts data center moratorium - but sets conditions

Minister for Trade and Industry says the country will be "more selective" in future

January 12, 2022 By: Peter Judge [Comment](#)

[f](#) [t](#) [in](#) [r](#) [e](#) [+](#)

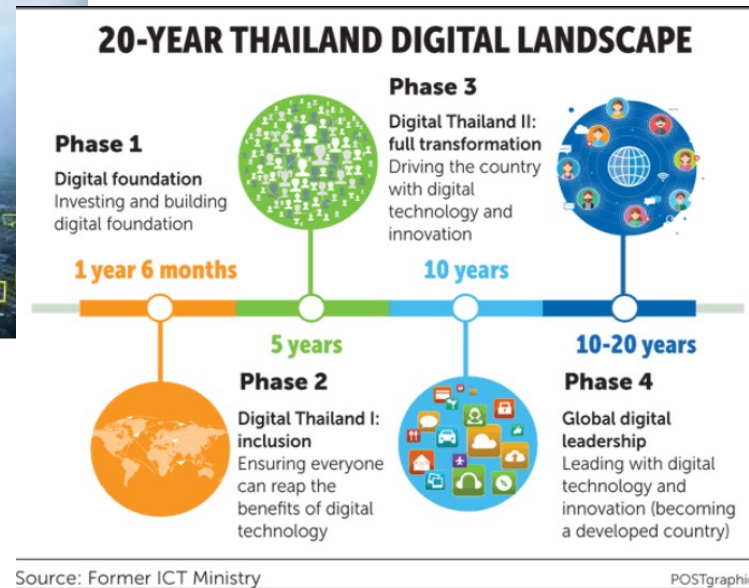
Singapore appears to have lifted its [moratorium on new data center projects](#), according to a statement by the Trade and Industry Minister this week - but new data centers will have to meet certain conditions.

Data centers contribute to Singapore's growth, but must be sustainable, said Minister Gan Kim Yong, in a written answer to Parliament on Tuesday, Jan 11. The country has paused new data center development since 2019, but this will now resume, though the government will impose measures to make them more efficient, he said.

Thailand shall not create the barrier or "headwind"



「Thailand 4.0」 , 「Digital Economy & Society Policy」



Thailand shall create the way also the tailwind !!

Both Digital & Power

