

Proxmox Datacenter Manager



PROXMOX
open source server solutions

Reimagining enterprise IT management – fluid and seamless

Phukao Pongsuwan

ThaiNOG Day #8

May 26, 2026

AGENDA

What we'll cover today



The Problem & Why PDM

01

Why managing many clusters gets painful



Overall Architecture

02

How PDM works and where it sits



PDM Features

03

Dashboard · Live Migration · Updates



Live Lab Demo + Q&A

04

See it live, then ask away

THE PROBLEM

Clusters managed in silos



Each cluster is a silo

Isolated, with no link between them



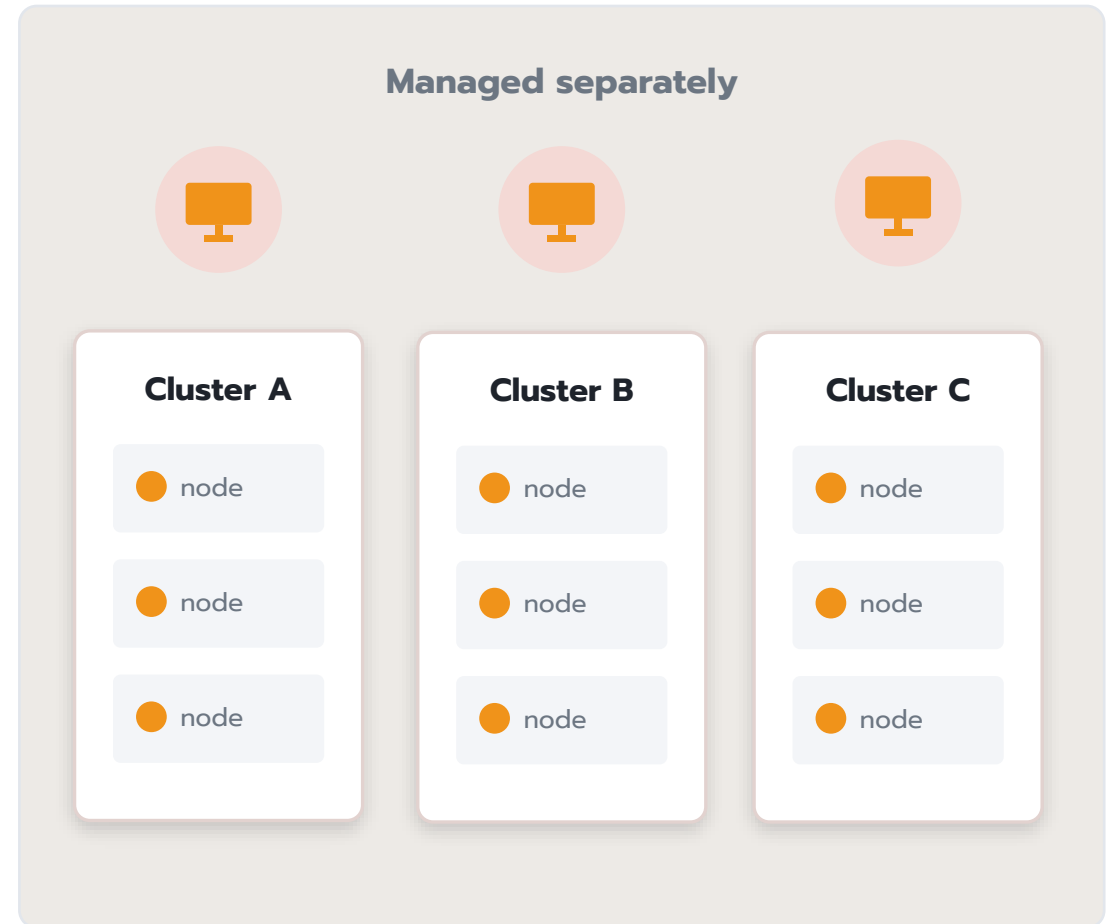
Juggling multiple screens

Manage separately, patch one by one, repeat work



No system-wide view

Hard to see, slow to decide, easy to miss

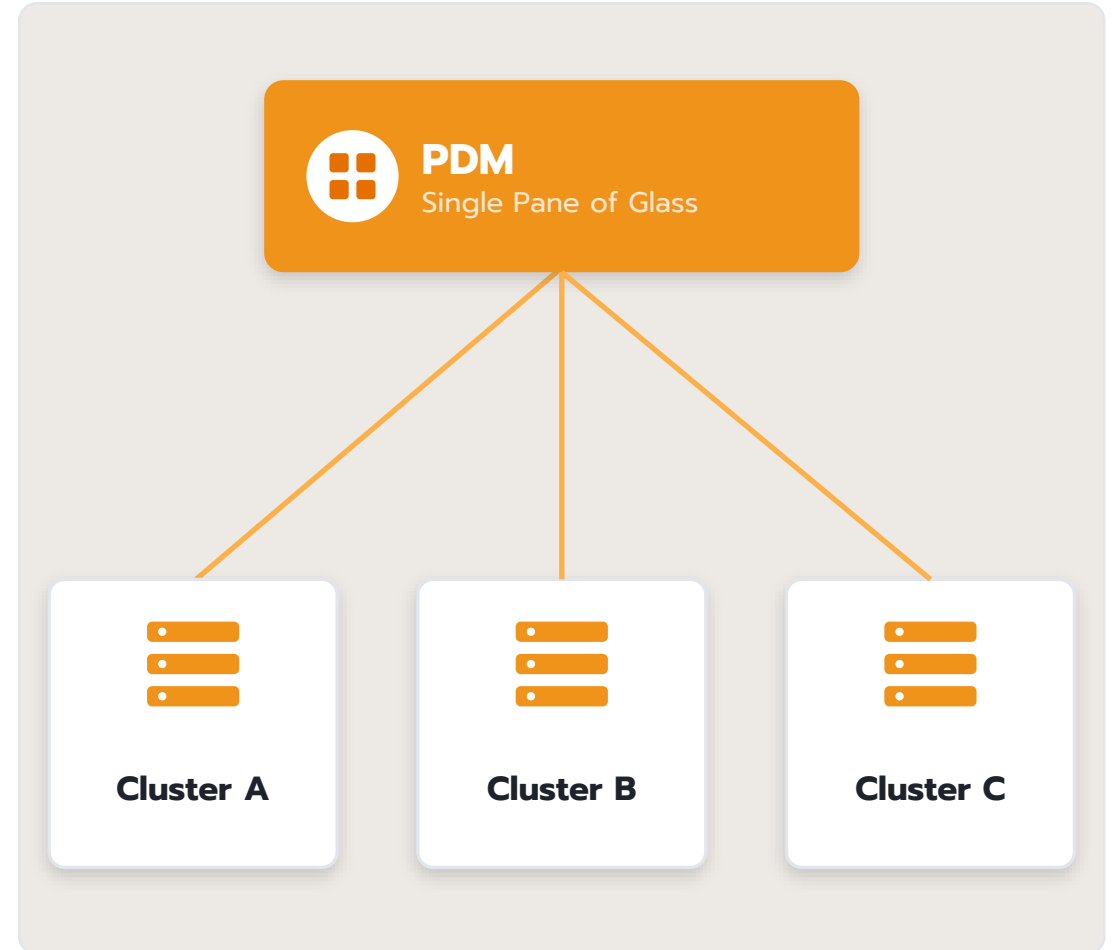


THE ANSWER

PDM: manage every cluster from one place

Single Pane of Glass

One central place to see and control every Proxmox VE cluster across the org



ARCHITECTURE

Lightweight, fast, and safely decoupled



Built on Debian 13

Standard, stable, easy to maintain



Backend written in Rust

Lightweight, fast, and memory-safe



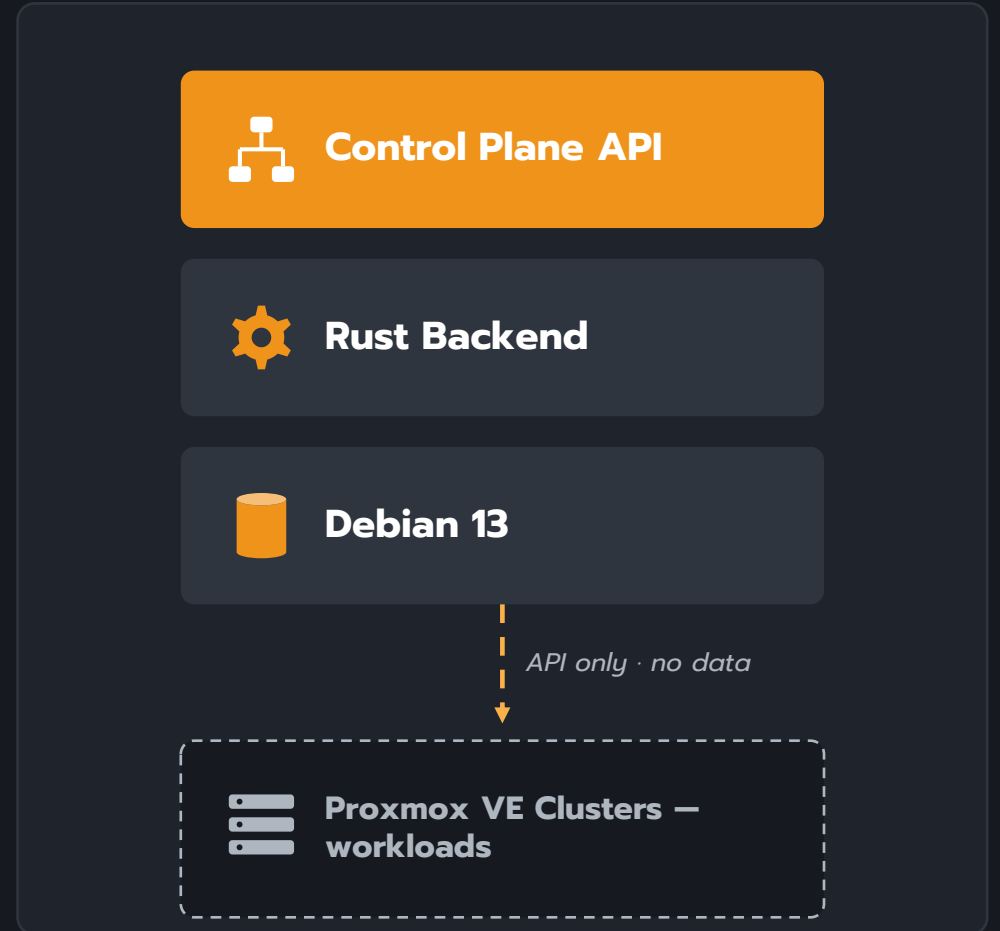
Decoupled from clusters

Not a single point of failure for workloads



PDM = Control Plane only

not a relay for your data



FEATURES

- Centralized Overview
- Multi-Cluster Management
- Basic VM & Container Life-Cycle Management
- Cross-Cluster Live Migration
- D Resource Utilization Monitoring
- Modern Web Interface
- API-Driven
- Large-scale enterprise deployments
- Distributed environments
- Get macro details in a single place
- Clear list of workloads

03

FEATURES

3 Key Features

Unified Dashboard · Cross-Cluster Live Migration · Centralized Updates

03

FEATURE 1

Unified Dashboard



Every cluster / node / VM

All in a single screen



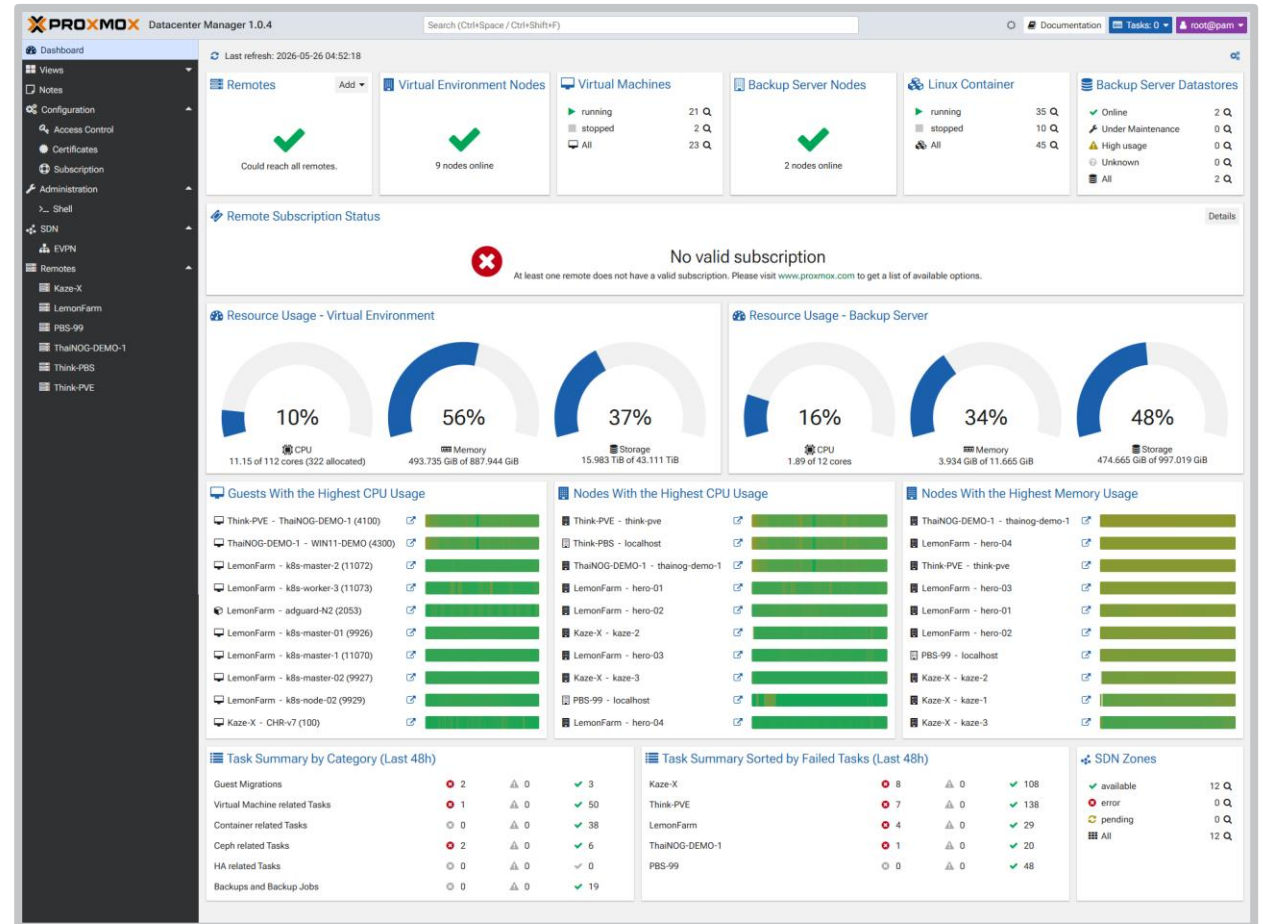
Real-time status & resources

CPU · RAM · storage across the fleet



Grasp the big picture instantly

No more switching between screens



Cross-Cluster Live Migration



Live-migrate VMs across clusters

No downtime



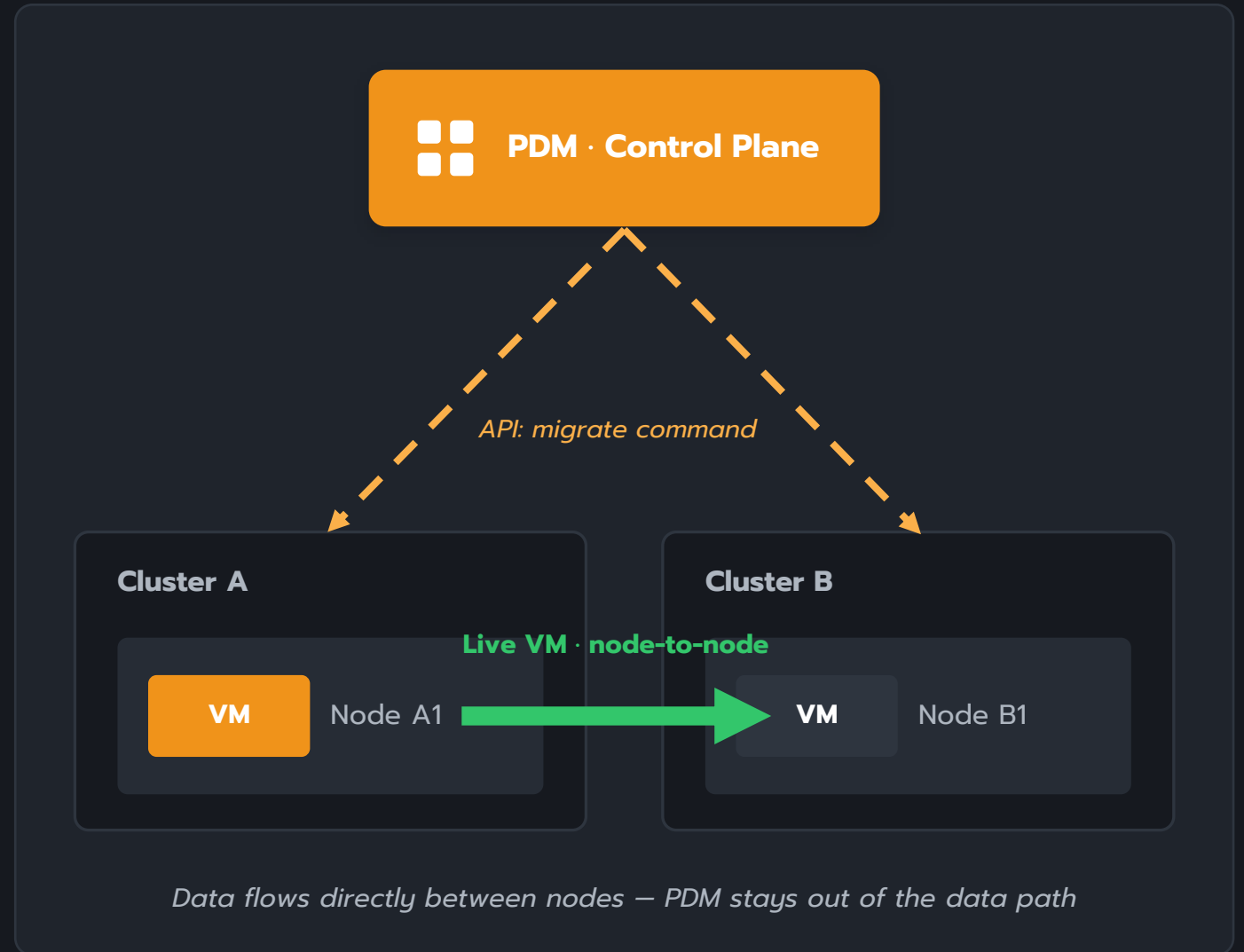
Control Plane ≠ Data Plane

PDM commands via API
data goes node-to-node



PDM is never the bottleneck

Data never flows through PDM



FEATURE 3

Centralized Updates

Update many clusters at once from one place – less manual work, fewer mistakes

Before

- Update clusters one by one
- SSH in / juggle many screens
- Risk of version drift & misses



With PDM

- Update every cluster in one place
- Less repetition, fewer errors
- Consistent patching across the fleet

TAKEAWAYS

PDM delivers on 3 fronts



01

Centralized

Manage every cluster from one place



02

Cross-Cluster

Live migration with no bottleneck



03

Updated together

Across the whole fleet at once

PLUS

PDM Installation & Storage Practice



PDM Installation

Manage Software-Defined Networking centrally,
right alongside your clusters



Storage Practice

Make source & destination storage compatible
before planning a migration



Ready? Let's see it live →



LIVE LAB

Live Lab Demo

1 Tour the Dashboard

2 Remote Adding

3 Cross-Cluster Migration

Q&A

Thank you



PHUKAO PONGSUWN

phukao@it-mountain.com

